

Imperial College
London

FUNDING YOUR STUDIES 2018 ENTRY

www.imperial.ac.uk/fees-and-funding/ug

LOUISE MÉNARD
STUDENT FINANCIAL SUPPORT MANAGER



INTRODUCTION

Cost of living in London

Types of funding

Student Loan assessments

Scholarships

When to apply

Useful links



COST OF LIVING IN LONDON



London budget	Weekly (£)	39 Weeks (£)	52 Weeks (£)
Accommodation and utilities: College Halls of Residence	172	6,708	-
Accommodation and utilities: Private	176	6,864	9,152
Food	50	1,950	2,600
Travel	27	933.30	1,080
Personal	39	1,521	2,028
Total	£288–£292	£11,112– £11,268	£14,860

Living in halls includes a £2 weekly contribution to the Activities fund.

www.imperial.ac.uk/fees-and-funding/living-costs/

FROM OUR COST
OF LIVING SURVEY
2016

TYPES OF FUNDING



Government funding

Tuition Fee Loan

»Home & EU students

Maintenance Loan

»Home students

Imperial College
London

Imperial funding

Imperial Bursary

»Home students

Scholarships

»All students



GOVERNMENT TUITION FEE LOAN



Tuition Fee Loan

Imperial tuition fees = £9,250

All Home and EU students qualify regardless of household income

Paid directly to Imperial

Start repaying from April after graduating if your income is above £21,000*

Repayment amounts depends on your income level, not loan level

Repayments

<£21,000: No repayments

£25,000: £30 per month

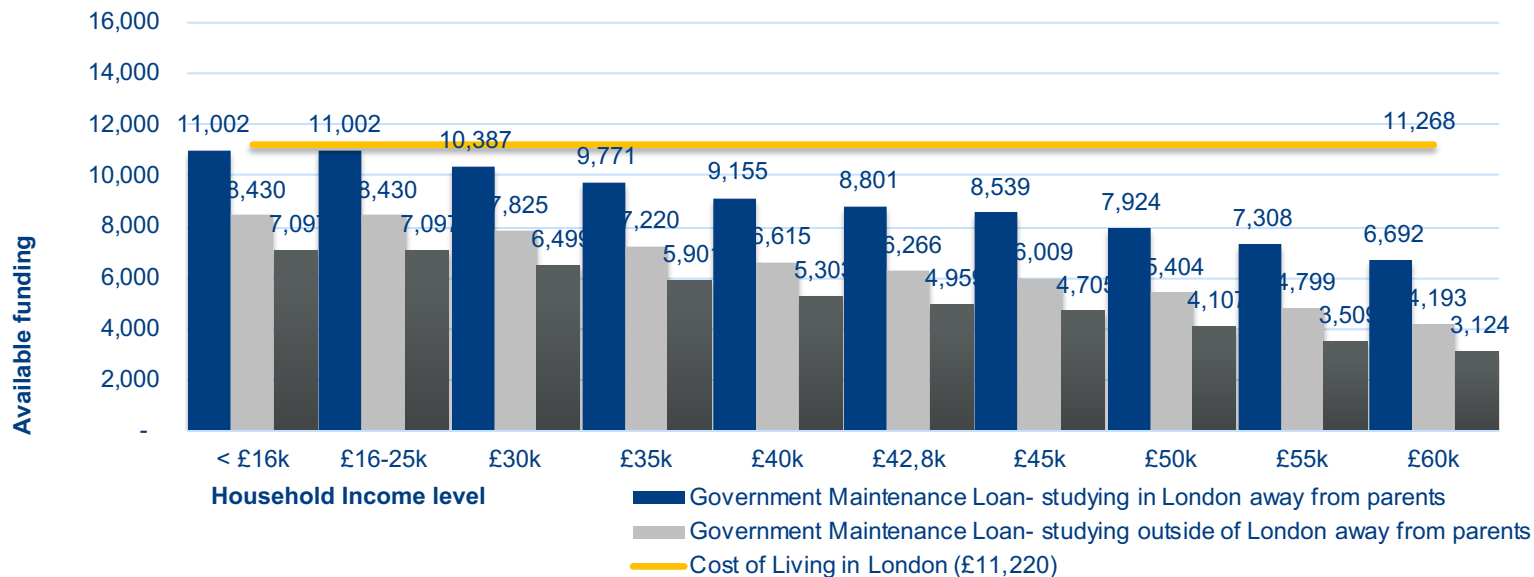
£30,000: £67 per month

£40,000: £142 per month

£50,000: £217 per month

GOVERNMENT MAINTENANCE LOAN


-Funding is based on 2017-18 government figures



IMPERIAL BURSARY 2018–19

Household Income	Imperial Bursary
£16,000 or less	£5,000
£16,001–£50,000	£4,000
£50,000– £55,000	£3,000
£55,001– £60,000	£2,000

www.imperial.ac.uk/fees-and-funding/imperial-bursary



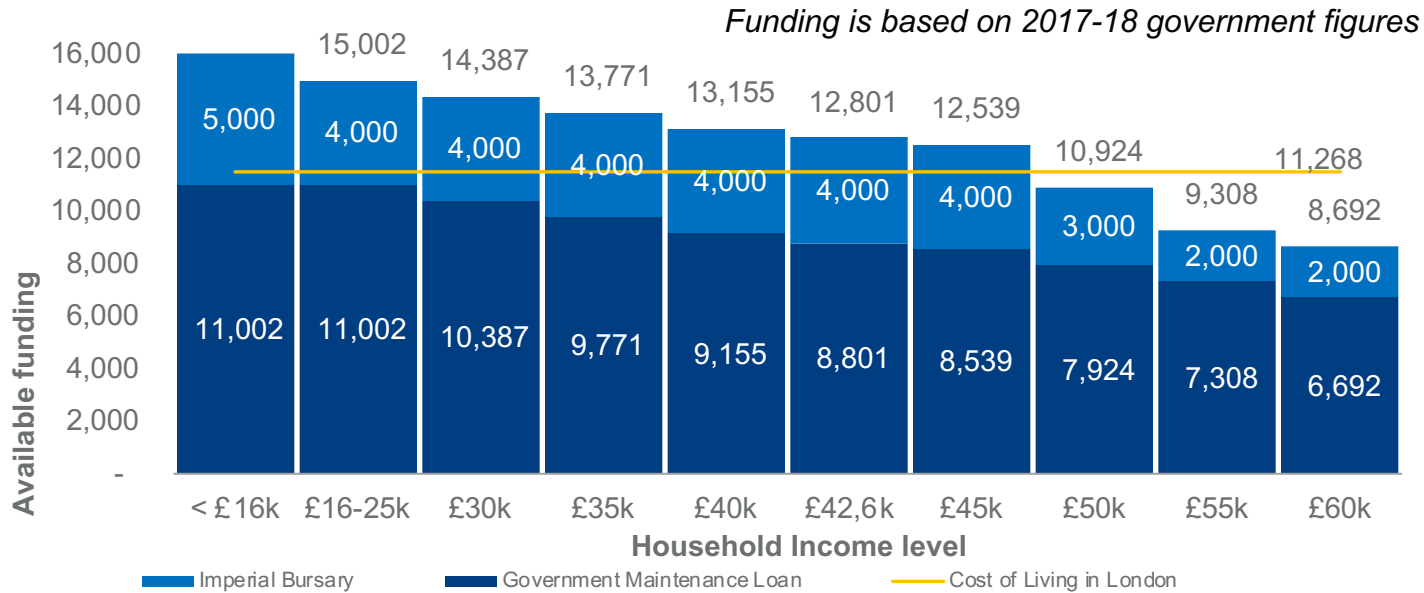
One of the most generous bursary schemes of its kind in the UK!

Funding for every year of your study!*

No other qualifying criteria!

* Income dependent and excluding repeat and NHS funded years

TOTAL MAINTENANCE FUNDING AVAILABLE



HOW IS HOUSEHOLD INCOME ASSESSED?

2018–19 applicants will be assessed on their household income for **2016–17 tax year**.

You can also have a current-year assessment if your circumstances have changed.

Salary, taxable state benefits, pensions, income from savings and investments and any other sources of income.

Private pension contributions and £1,000 for every other child in university education.



How am I assessed?

What information do they use?

What can be deducted?

MEDICAL STUDENTS

Medical students studying a 6 year
MBBS course

Graduate Entry students studying
a 5 year course

Intercalating students transferring
for one year to another university.



Government funding: Years 1 to 4



NHS funding: Years 5 and 6

STUDENT FINANCE CALCULATORS

Imperial Student Funding Calculator

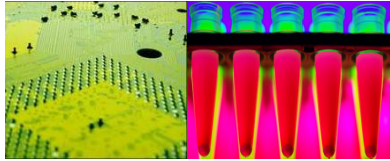
www.imperial.ac.uk/fees-and-funding/calculator

Government Student Finance Calculator

www.gov.uk/student-finance-calculator



SCHOLARSHIPS



2018–19: £500,000+

Scholarships can be awarded based on:

- » Combined financial need and academic merit
- » Solely on academic merit and potential
- » Extracurricular ability (sport, music, etc.)

Generally

- » Between £1,500 and £20,000
- » No application forms

112 Undergraduate President's Scholarships

www.imperial.ac.uk/fees-and-funding/scholarships-search



WHEN TO APPLY FOR FUNDING



Apply to study at Imperial and start looking into how you will fund your studies

October



Apply for funding from Student Loans Company etc.

We will let you know when SLC opens for applications

February



Scholarships deadline aligns with the UCAS outstanding decisions deadline

If SLC confirms your income by this date, you'll be considered for scholarships with a financial criteria.

May



Following A-level results, we will write to confirm what Imperial Bursary you are eligible to receive

August

WHEN THINGS DON'T GO AS PLANNED

Student Support Fund

A fund to help all students who are experiencing financial difficulties

Can help with on-going living costs or emergency, one-off payments based on individual assessments

Cannot assist with tuition fees

You don't have to pay it back

Interest-free emergency loans also available



RESOURCES

Imperial College
London

STUDENT FINANCIAL SUPPORT



www.imperial.ac.uk/fees-and-funding/ug

Country	Funding Body	Contact Details
England	Student Finance England	www.gov.uk/student-finance
Scotland	Student Awards Agency for Scotland	www.saas.gov.uk
Wales	Student Finance Wales	www.studentfinancewales.co.uk/
Northern Ireland	Student Finance Northern Ireland	http://www.studentfinancenri.co.uk